

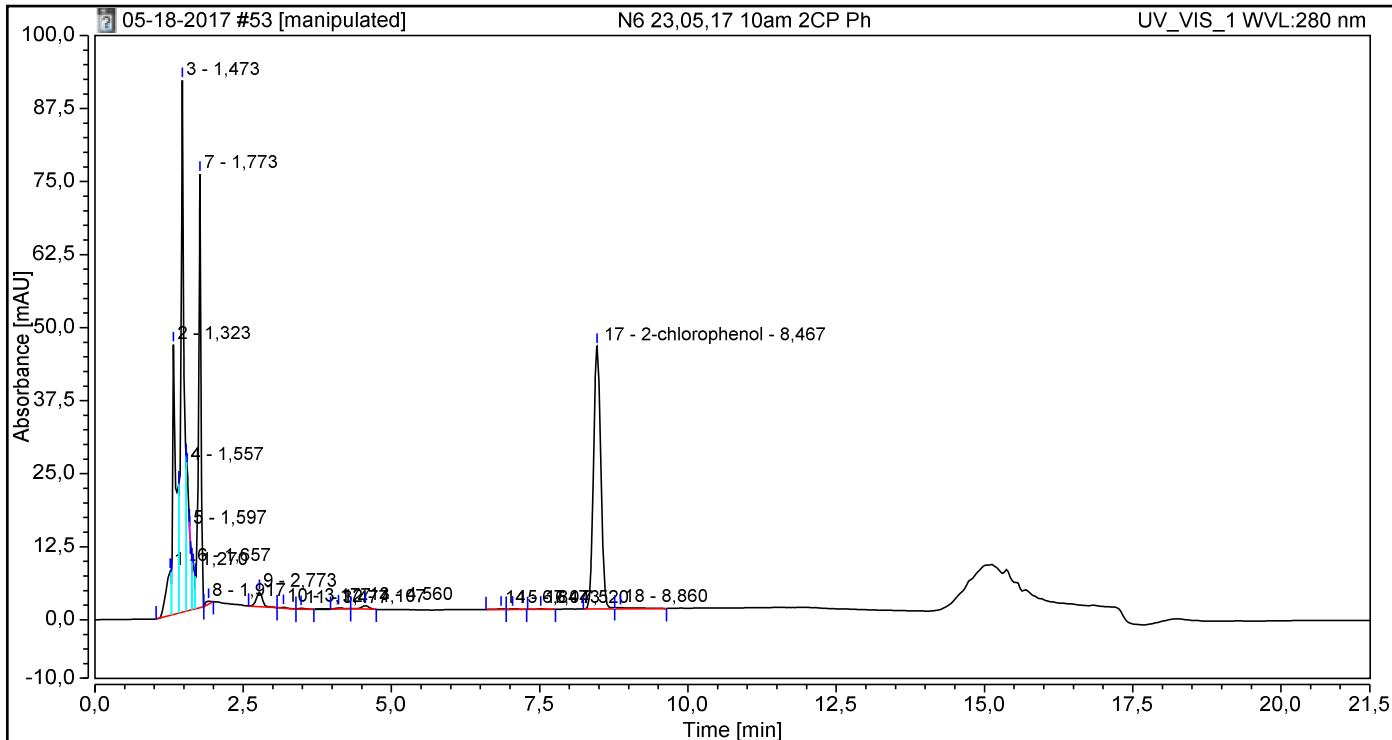
Chromatogram and Results

Injection Details

Injection Name: **N6 23,05,17 10am 2CP Ph**
 Vial Number: **BD5**
 Injection Type: **Unknown**
 Calibration Level:
 Instrument Method: **chlorophenol 285 nm_21,5**
 Processing Method: **chlorophenol**
 Injection Date/Time: **24.5.17 14:20**

Run Time (min): **21,50**
 Injection Volume: **40,00**
 Channel: **UV_VIS_1**
 Wavelength: **280,0**
 Bandwidth: **4**
 Dilution Factor: **2,0000**
 Sample Weight: **1,0000**

Chromatogram



Integration Results

No.	Peak Name	Retention Time min	Area mAU*min	Height mAU	Relative Area %	Relative Height %	Amount mg/L
1		1,270	0,777	7,561	3,54	2,51	n.a.
2		1,323	3,111	46,187	14,17	15,36	n.a.
3		1,473	5,304	91,017	24,17	30,27	n.a.
4		1,557	1,603	24,864	7,30	8,27	n.a.
5		1,597	0,001	0,057	0,00	0,02	n.a.
6		1,657	0,372	7,351	1,70	2,45	n.a.
7		1,773	3,672	74,192	16,73	24,68	n.a.
8		1,917	0,060	0,484	0,27	0,16	n.a.
9		2,773	0,294	2,471	1,34	0,82	n.a.
10		3,177	0,020	0,140	0,09	0,05	n.a.
11		3,477	0,014	0,129	0,06	0,04	n.a.
12		4,107	0,028	0,204	0,13	0,07	n.a.
13		4,560	0,086	0,577	0,39	0,19	n.a.
n.a.	phenol	n.a.	n.a.	n.a.	n.a.	n.a.	n.a.
14		6,847	0,014	0,096	0,07	0,03	n.a.
15		7,043	0,019	0,096	0,09	0,03	n.a.
16		7,520	0,013	0,070	0,06	0,02	n.a.
17	2-chlorophenol	8,467	6,475	44,980	29,50	14,96	33,1616
18		8,860	0,082	0,194	0,38	0,06	n.a.
Total:			21,946	300,671	100,00	100,00	

